

# 275/PF 500F-600F-800F



## FIXED BOLLARDS WITH BRACKETS TO BE ANCHORED IN GROUND

The fixed 275/PF bollards have been designed and built with architectural appearance similar to that of the retractable bollards and therefore also allows the combined use of both versions. Current models are the result of our 40 years' experience in the security field and in excess of 20 years in the specific design and manufacture of bollards.

### GENERAL FEATURES

The fixed bollards are used in public or private areas in order to define or prevent the parking of vehicles, for preventing access to vehicles in pedestrian areas. These items can be cemented to the ground (in this case, the breakout resistance depends on the depth to which it is anchored into the ground) or be secured in place by chemical anchors in places where you cannot make the same anchor, or where masonry is already completed.



PAG.1/2

**PILOMAT**  
**HÖRMANN**  
100% MADE IN ITALY

PILOMAT s.r.l.  
www.pilomat.com / pilomat@pilomat.com  
Via Zanica 17/p, 24050, Grassobbio (BG) Italy  
Tel. +39.035.29.72.20  
Copyright 2022© Pilomat S.r.l. All rights reserved

REVIEW 13/07/2022

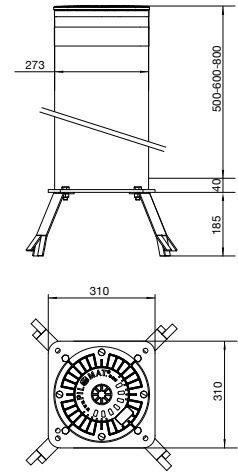
Information in this document is for reference only. In pursuit of its policy of continuous refinement and improvement, Pilomat reserves the right to amend this information at any time and without prior notice.  
Picture shown is for illustration purpose only.

# 275/PF 500F-600F-800F



## AVAILABLE ITEMS

- \_\_\_\_\_ BOLLARD 275/PF FEV - NORMAL STEEL PAINTED
- \_\_\_\_\_ BOLLARD 275/PF IXV - STAINLESS STEEL PAINTED
- \_\_\_\_\_ BOLLARD 275/PF IXS - STAINLESS STEEL BRUSHED
- \_\_\_\_\_ KNURLING ON CYLINDER
- \_\_\_\_\_ HEAD WITHOUT LOGO FOR 275/PF
- \_\_\_\_\_ MULTILED LIGHTING STRIP- 25 LED POINTS
- \_\_\_\_\_ LIGHTING STRIP POWER CIRCUIT FOR FIXED BOLLARDS (MAX. 8 BOLLARDS)
- \_\_\_\_\_ REFLECTING ADHESIVE STRIP - WHITE (NO-LOGO)
- \_\_\_\_\_ PAINTING WITH RAL COLOUR ON REQUEST



	275/PF-500F	275/PF-600F	275/PF-800F
CYLINDER MATERIAL	S235JR NORMAL STEEL - X5CrNi 18-10 (AISI 304) STAINLESS STEEL X5CrNiMo 17-12-2 (AISI 316) STAINLESS STEEL		
CYLINDER DIAMETER	273mm		
CYLINDER HEIGHT	500mm	600mm	800mm
CYLINDER NORMAL STEEL THICKNESS	6mm		
CYLINDER STAINLESS STEEL THICKNESS	AISI 304: 6mm - AISI 316: 4mm		
CYLINDER NORMAL STEEL FINISH	ANTI-CORROSION TREATMENT - STANDARD PAINTING GREY ANTHRACITE		
CYLINDER STAINLESS STEEL FINISH	GREY ANTHRACITE STANDARD PAINTING OR BRUSHING		
NEW CYLINDER FINISH	N.A.	STONE COATING AND INDIVIDUALLY DESIGNED CYLINDER COVER UPON CUSTOMER'S REQUEST	
OTHER CYLINDER FINISH	KNURLING		
REFLECTING ADHESIVE STRIP	STANDARD - HEIGHT 55MM		
PROTECTION CLASS	IP67		
IMPACT RESISTANCE (WITHOUT DEFORMATION)	40.000 J		
BREAKOUT RESISTANCE	250.000 J		
BRACKETS TO WALL	STANDARD - N. 4 BRACKETS		
CONNECTION LINE FOR LIGHTING STRIP (OPTIONAL)	STANDARD 10M (MAX. LENGTH 80M)		

